



## Quick Start Guide

AccessPatrol has three main components that need to be installed on your computers: server, console and client. You will only need to install one server on your network. You can install as many console as you like. You will need to install the client on the computers you want to control, by using the Remote Client installer.

### Installing the AccessPatrol Server and Console

1. Download the AccessPatrol setup file to the computer you want to install the server and console on.
2. Double click on the setup file called **cwACP.exe** to launch the install wizard and follow the instructions on your window.
3. For the AccessPatrol installation Mode, select **Single Console** (if you want to install more than one console on your network, select Multiple Consoles. It is required that you install IIS.)
4. When asked to enter the IP address of the system where the AccessPatrol Server is installed, put in **LOOPBACK**
5. AccessPatrol will proceed to install the core software and the requirements on your computer
6. The AccessPatrol Server and Console are now installed on your computer.

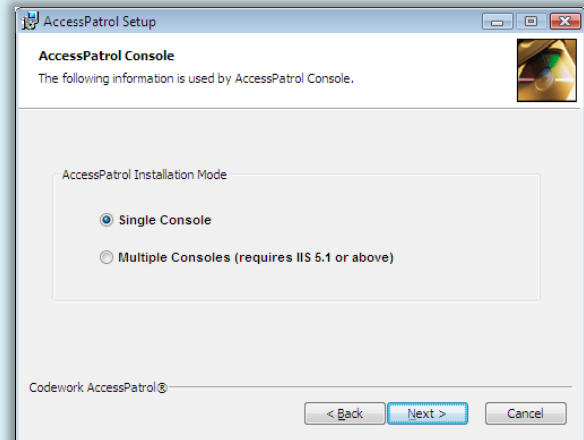


Figure 1 AccessPatrol Installation Wizard

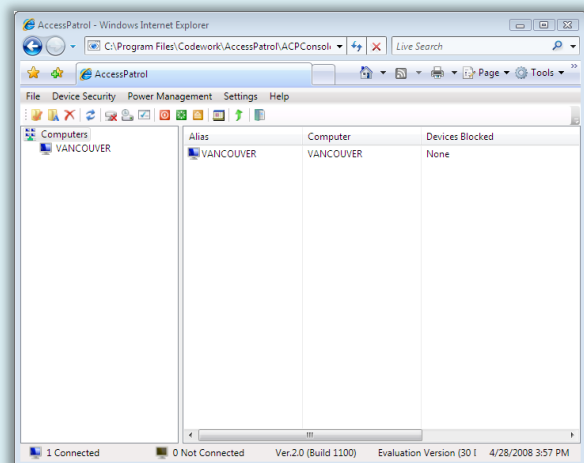


Figure 2 AccessPatrol Console

## Installing the AccessPatrol Client

You must now install the client component on the computers you want to control.

### Option 1: Manual Installation of the AccessPatrol Clients

1. On the Server computer, go to C:\Program Files\Codework\AccessPatrol\ACPCClient\cwACPCClient.msi
2. Run the file on each computer you want to control.
3. When prompted, enter the IP address (or the computer name) of the AccessPatrol Server. You can also change the client password during this stage of the installation (you can also change it in the AccessPatrol Console in the future).
4. Click **install** to begin installation.
5. At the Wizard completed screen, click **finish** to complete the setup.
6. The clients will now connect to the server and you can control them via the AccessPatrol Console.

### Option 2: Remote installation of the AccessPatrol Clients

1. On your AccessPatrol Console, go to **Settings > Remote Client Install**.
2. Browse for the setup file under C:\Program Files\Codework\AccessPatrol\ACPCClient\cwACPCClient.msi

3. Choose a reboot option.
4. Select the appropriate install: **Fresh install** or **upgrade**.
5. Enter the **IP address** (or the computer name) of your AccessPatrol server and the **client password** (optional).
6. Type in the **IP address** (or computer name) of computers you want to install the client component on. Or click on the **search** button to search for all the computers on your network.
7. Enter the **administrator username and password** of the computers that you want to install the client component on. If the username and password is different for your computers, then you must do a separate install.
8. The wizard will proceed to install the AccessPatrol client on your computers.
9. The clients will now connect to the server and you can control them via the AccessPatrol Console.

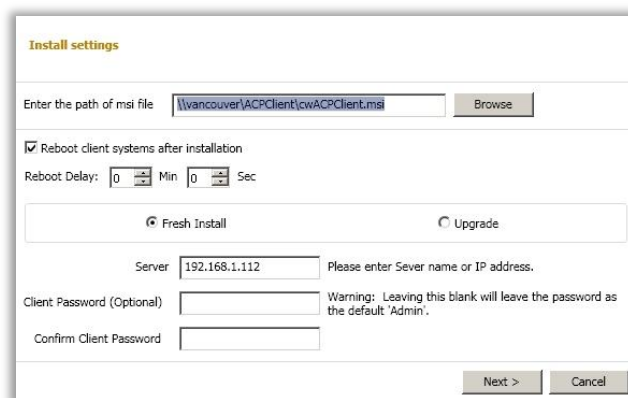
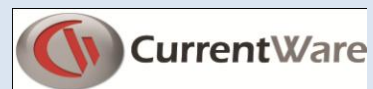


Figure 3 Remote Client Installer

## Contact Us:

Sales and Pricing: [info@currentware.com](mailto:info@currentware.com)  
Product information: [info@currentware.com](mailto:info@currentware.com)  
Technical Support: [info@currentware.com](mailto:info@currentware.com)  
Telephone: UK/ Europe/ World: +44-(0)161-474-0444  
Americas: 1-613-368-4300  
Asia: +91-484-2415055



[www.AccessPatrol.com](http://www.AccessPatrol.com)